

Electrogastrography (EGG) Assembled Sensor Data Sheet

BUNDLE-EGG-UCE6 221220

SPECIFICATIONS

- > Pre-assembled Electrogastrography (EGG) sensor
- > Single cable connection

FEATURES

- > Allows basic EGG data acquisition
- > Easy to wear
- > Plug & play design
- > Raw data acquisition
- > 3D Printed Sensor Casing (PLA)

APPLICATIONS

- > Human-Computer Interaction
- > Eye gaze analysis
- > Neurofeedback
- > Sleep studies
- > Neurophysiology studies
- > Psychophysiology
- > Biomedical devices prototyping

GENERAL DESCRIPTION

The BITalino assembled EGG sensor is designed for everyone who wants to measure stomach activity by evaluating Electrogastrography (EGG) signals. This bundle is completely assembled with our 3D Printed Casing for BITalino (r)evolution Plugged making it more convenient to use, wearable, sharable & transportable. The Assembled EGG Sensor allows repeatedly accurate & fast measurements, once the user can benefit from the single cable connection.

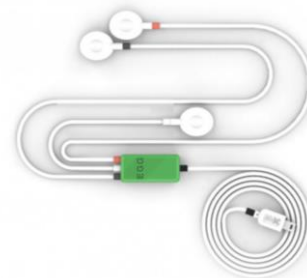


Fig. 1. Assembled EGG sensor – top view.



Fig. 2. Assembled EGG sensor – inside view with connection pins (IN+/- and REF).

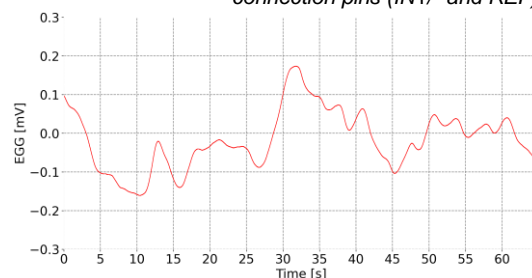


Fig. 3. EGG Signal Sample at rest.

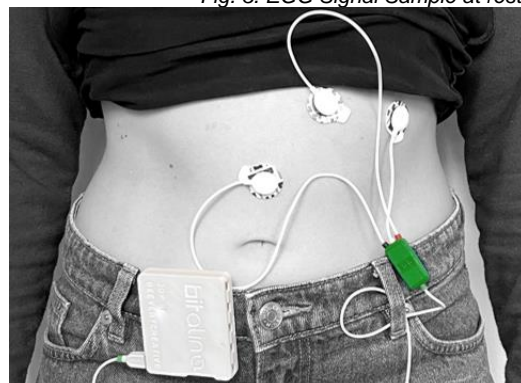


Fig. 4. EEG electrode positioning with REF on the left costal margin and IN+/- "2 cm above the mid-point between the xiphoid process and the umbilicus (electrode 2) and on an upper 45 degree angle 5 cm away!" according to Riezzo et al.

¹ G. Riezzo, F. Russo, and F. Indrio, "Electrogastrography in adults and children: The strength, pitfalls, and clinical significance of the cutaneous recording of the gastric electrical activity," *Biomed Res. Int.*, vol. 2013, 2013.

bitalino

PLUX – Wireless Biosignals, S.A.
Av. 5 de Outubro, n. 70 – 2
1050-059 Lisbon, Portugal
bialino@plux.info
http://bialino.com/

REV A

© 2020 PLUX  

This information is provided "as is," and we make no express or implied warranties whatsoever with respect to functionality, operability, use, fitness for a particular purpose, or infringement of rights. We expressly disclaim any liability whatsoever for any direct, indirect, consequential, incidental or special damages, including, without limitation, lost revenues, lost profits, losses resulting from business interruption or loss of data, regardless of the form of action or legal theory under which the liability may be asserted, even if advised of the possibility of such damages.



BEWARE: DIRECT OR INDIRECT COUPLING TO THE MAINS MAY RESULT IN SHOCKING HAZARD



Electrogastrography (EGG) Assembled Sensor Data Sheet

TRANSFER FUNCTION

[EGG datasheet](#)

PHYSICAL CHARACTERISTICS

[EGG datasheet](#)

PACKAGING

Weight: 19 g

ORDERING GUIDE

Part #	Description
BUNDLE-EGG- UCE6	The pre-assembled version of the Electrogastrography (EGG) sensor specially designed for gastric activity measurement.